

AdminToys Suite

Installation &
Setup Guide

Copyright © 2008-2009 Lovelysoft. All Rights Reserved.

Information in this document is subject to change without prior notice.

Certain names of program products and company names used in this document might be registered trademarks or trademarks owned by other entities.

Microsoft and Windows are registered trademarks of Microsoft Corporation.

Lovelysoft

<http://www.admintoysuite.com/>

<http://www.lovelysoft.com/>

For Sales and Technical Support (Worldwide):

<http://www.admintoysuite.com/customerservice/>

Technical Support email:

help@admintoysuite.com

Introduction

AdminToys Suite is a complex remote management solution designed for your Windows-based network.

AdminToys Suite is a collection of administration utilities for remote management of Windows Servers and Workstations. AdminToys Suite comes with 19 network tools that help you to save time on everyday administrative tasks:

- Monitor computers performance and reliability on your network
- Manage running processes and applications remotely
- Inventory computers in your corporate networks for hardware configuration
- Track and limit disk space usage on remote machines
- Synchronize computer clock all over your network
- Perform a planning restart/shutdown or power on network computers
- Execute commands remotely on a stand-alone computer, group of computers or in the entire domain
- Configure network adapters remotely
- View or change Windows Registry keys and values on remote computers
- Control services on remote machine
- View logged events
- Gather your network computer's statistic and export it to CSV, TXT or HTML

Minimum System Requirements

Please make sure that the computer on which you plan to install AdminToys Suite meets the minimum system requirements for the program to run:

Operating system	CPU	RAM
Windows 2000	200 MHz	64 MB
Windows XP	400 MHz	128 MB
Windows Vista / Server 2003	800 MHz	512 MB
Windows 7 / Server 2008	1 GHz	1024 MB

Free Disk Space: 30 MB

Graphics: SVGA video card (at least 1024x768 recommended)

Input devices: keyboard and mouse (or other pointing device)

Target remote systems which AdminToys Suite can handle, may be running on:

- Windows 7
- Windows Server 2008
- Windows Vista
- Windows Server 2003
- Windows XP (Professional only)
- Windows 2000
- Windows Me
- Windows 98/95 *
- Windows NT 4 *

AdminToys Suite can also work on stand-alone computers without connection to a network.

* See REMARKS section at

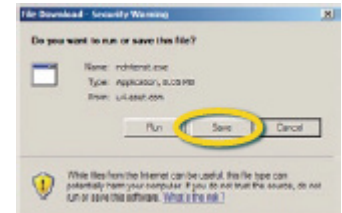
<http://www.admintoyssuite.com/customerservice/productrequirements/>

Installation Instructions

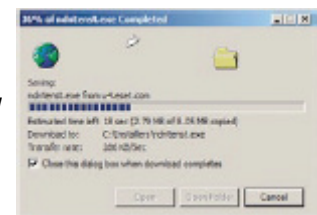
To install the download version (recommended, as it will be the most up-to-date), first download the installer from the AdminToys Suite website: <http://www.admintoyssuite.com/download/>

You will see a window similar to this:

Click 'Save'. Choose to save the download to your desktop (or an Installers folder if you have one).

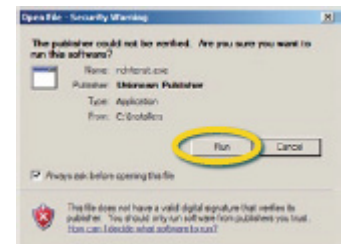


You will then see the download progress in a window similar to this:



Once it has downloaded, locate and run the file by double clicking on it.

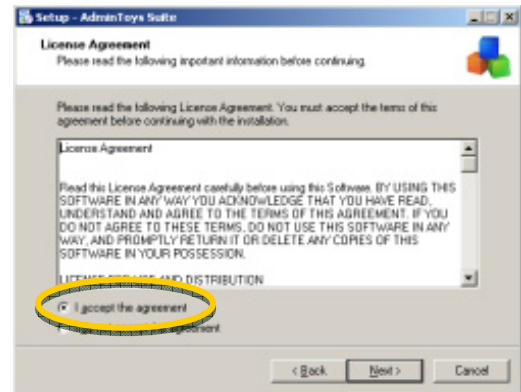
You must have administrator privileges on your PC.



End User License Agreement

Installation starts with the Welcome screen. Click Next>. The next screen will be the End User License Agreement, on which you must choose 'I accept the agreement' and click Next> to continue installation.

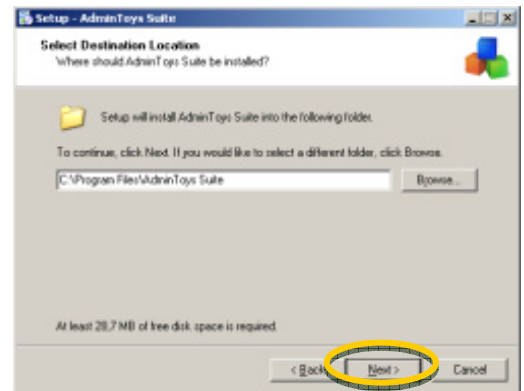
You are advised to read the terms of the license carefully before proceeding with the installation. If you decline the license terms, the installation cannot proceed.



Program Destination Folder

At this point you are allowed to change the destination folder of AdminToys Suite, if you have a specific reason for doing so.

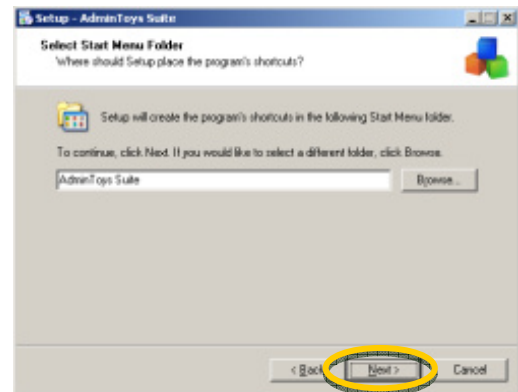
Unless there is a specific need to change the installation path – for instance, you want to install AdminToys Suite on a different drive, or already have a folder called AdminToys Suite on a different drive that you want to use instead, we recommend that the default setting is used.



Once you have the correct path, click Next> to proceed.

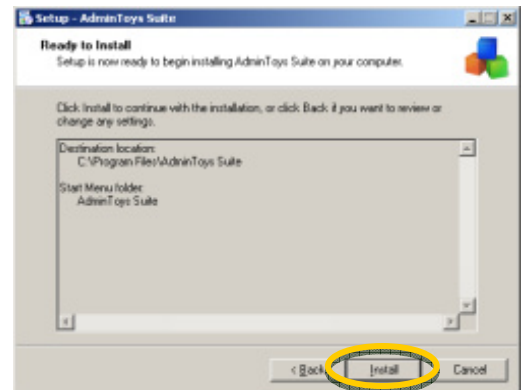
Start Menu Folder

This is the folder that will contain the program shortcut. Select a destination folder if the default isn't appropriate, and click Next>.

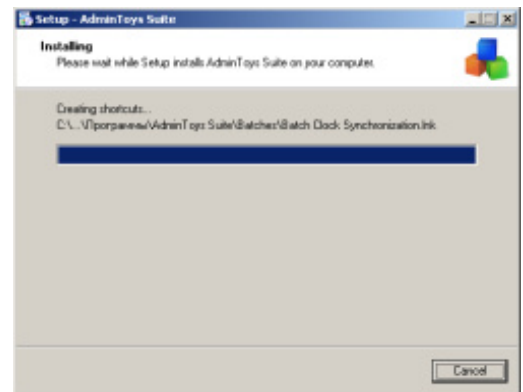


Completing Installation

The 'Ready to Install' window is displayed. If all locations are correct, click on the 'Install' button. If changes are required, click <Back and make appropriate changes before proceeding.



The 'Installing' informational window will be displayed while the program is automatically installed.

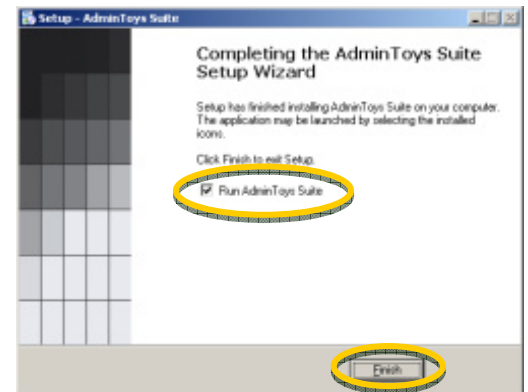


Launching AdminToys Suite

After the installation, the 'Completing the AdminToys Suite Setup Wizard' screen will be displayed.

Click Finish.

If the 'Run AdminToys Suite' box is checked, the application will then start.



The Installer will also create a shortcut on your computer's Desktop to quick access to AdminToys Suite Start Center. If you do not need a shortcut, remove it from the Desktop.